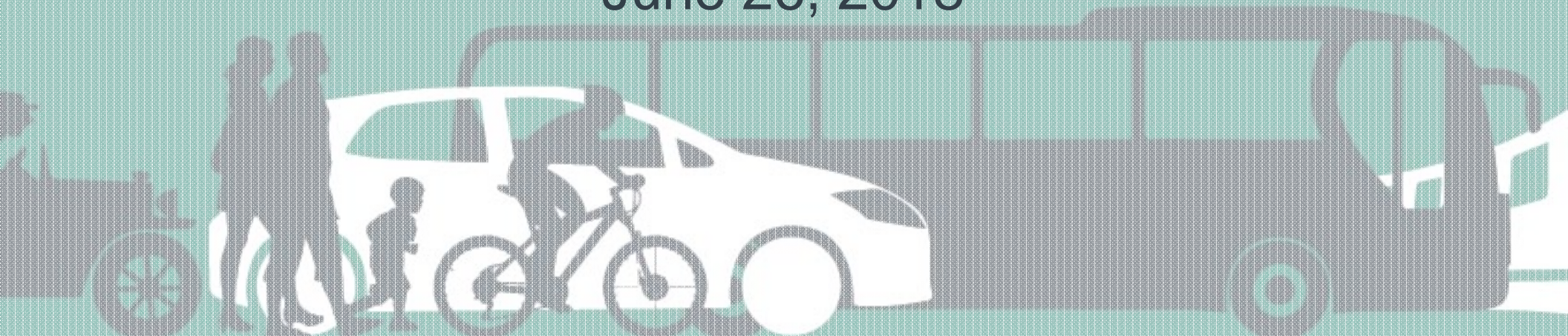


REIMAGINING 15-501 CORRIDOR STUDY

Public Workshop I

June 26, 2018



AGENDA

US 15-501 Corridor Overview

Study Goals and Schedule

Key Themes from Community and Travel Profile

Visioning

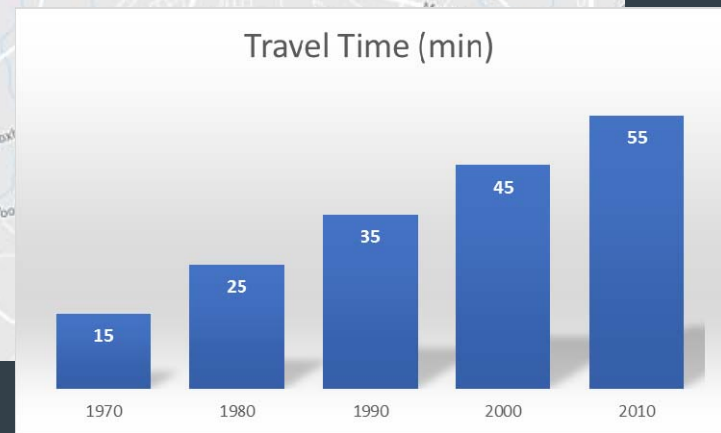
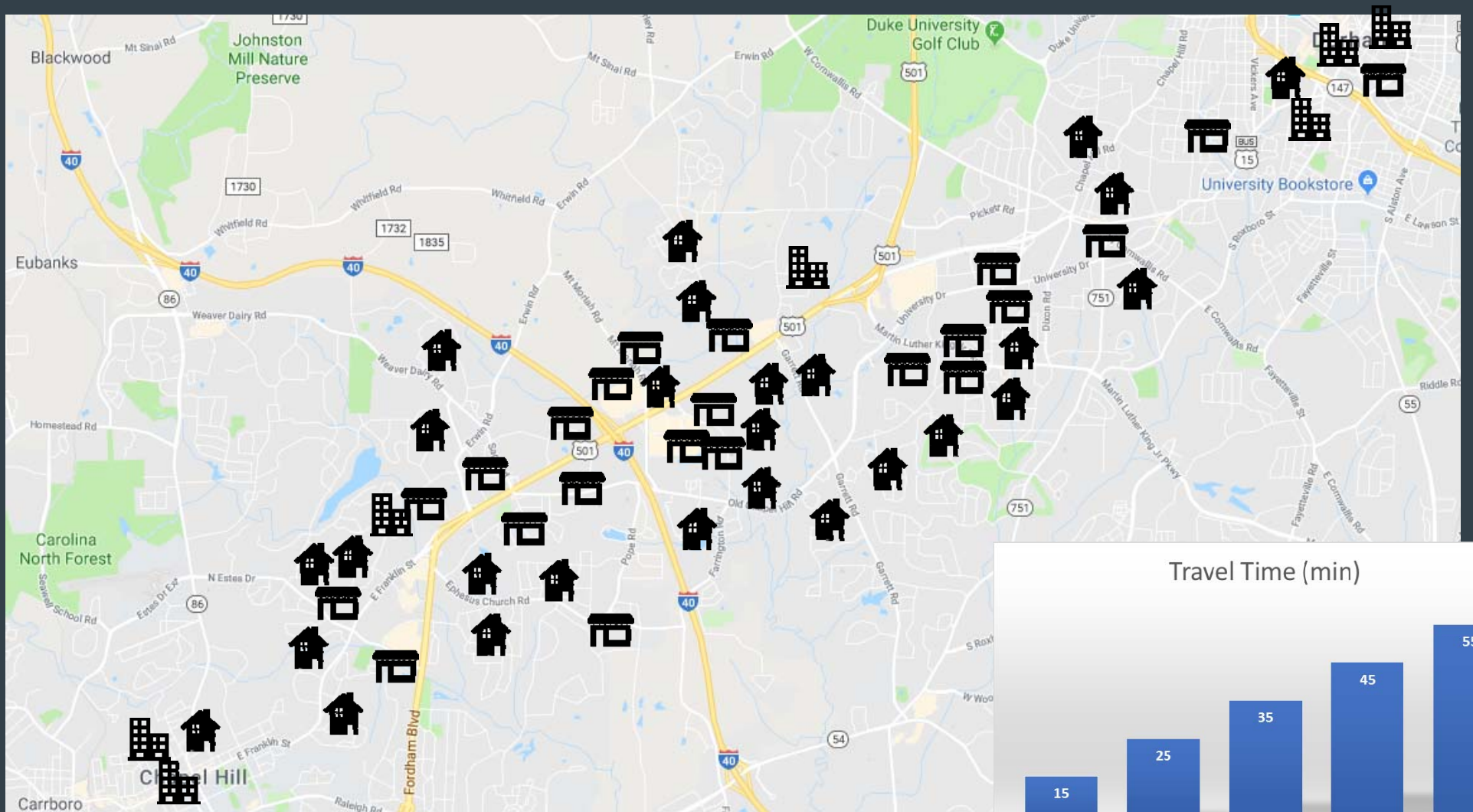
Public Engagement

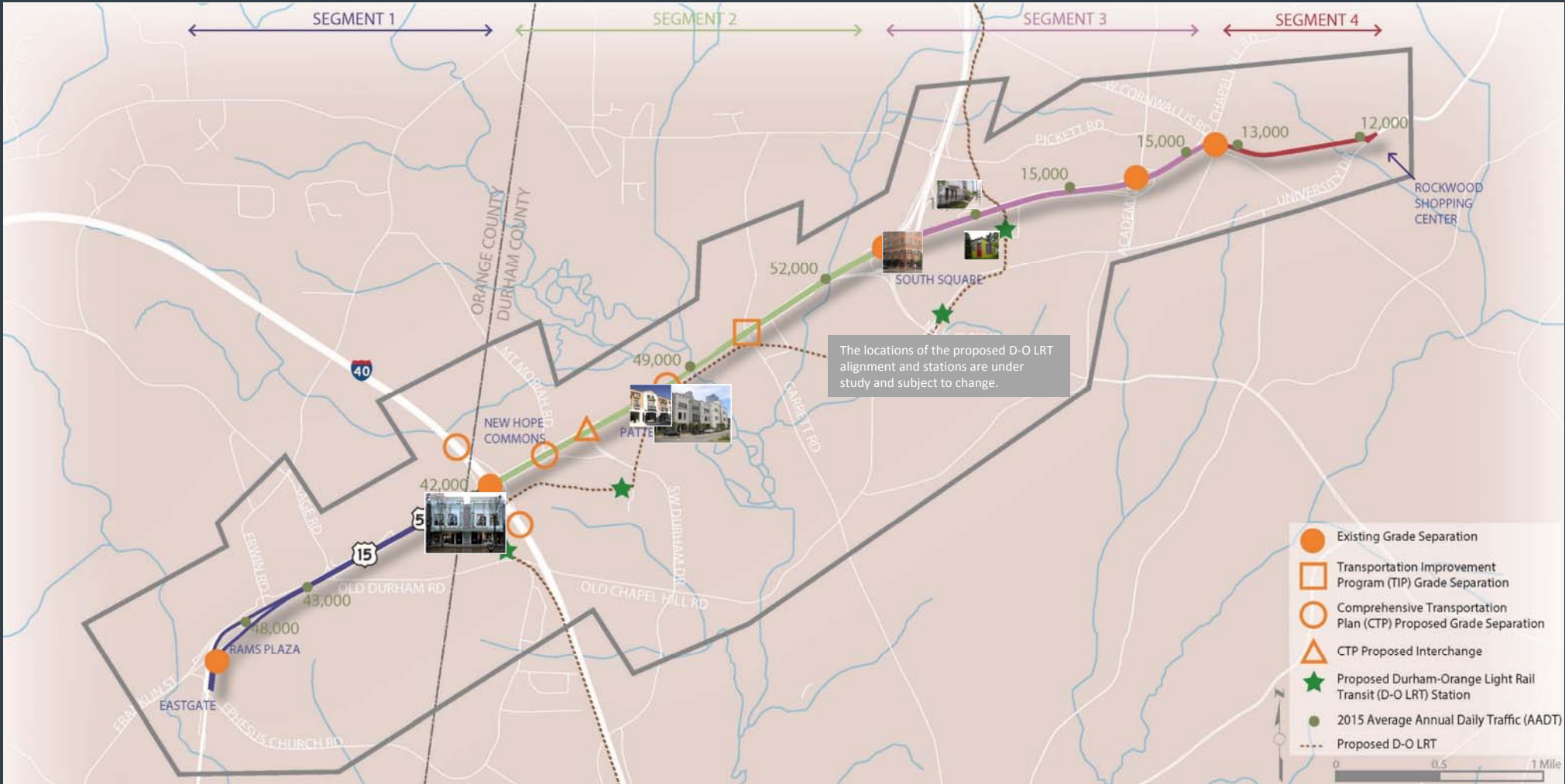
Open Discussion



US15-501 Corridor Overview









STUDY GOALS AND SCHEDULE



STUDY GOALS

2045 mobility vision for the corridor supported by stakeholders and the public



Overall vision for mobility and safety

Prioritized list of short-, mid-, and long-term recommendations

Master plan that integrates the latest land use and multimodal transportation vision for the corridor

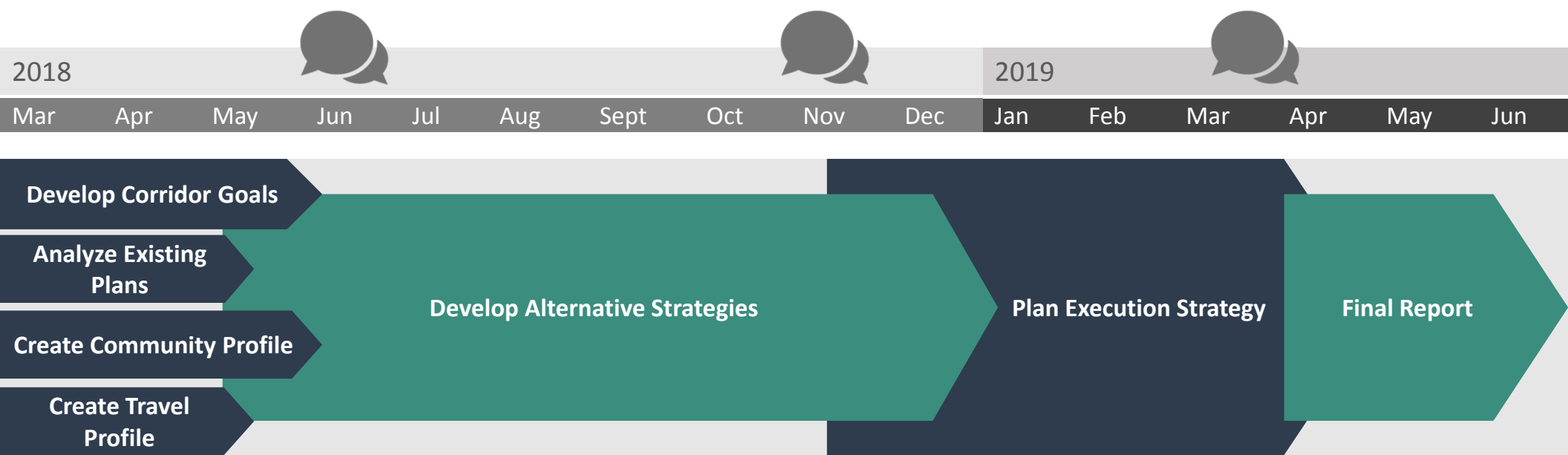
Conceptual designs and renderings for recommended cross-sections

Implementation strategies and performance criteria that support the vision

PROCESS



TASKS & SCHEDULE



 Public Engagement Period





KEY THEMES

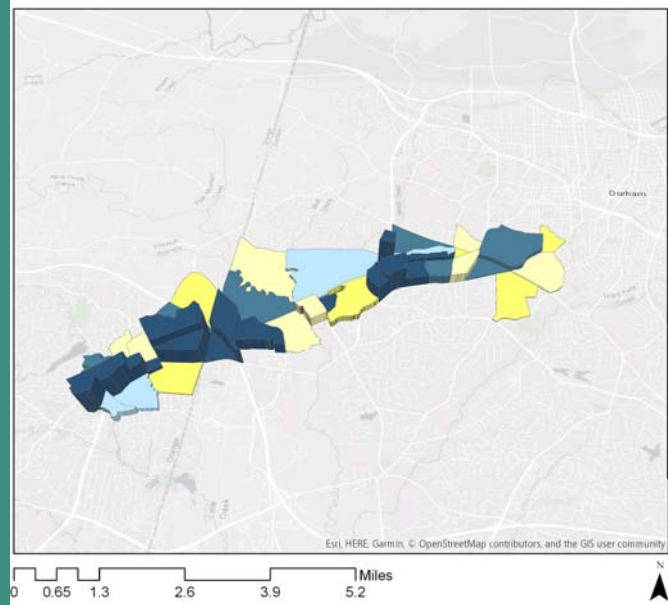
Community and Travel Profile



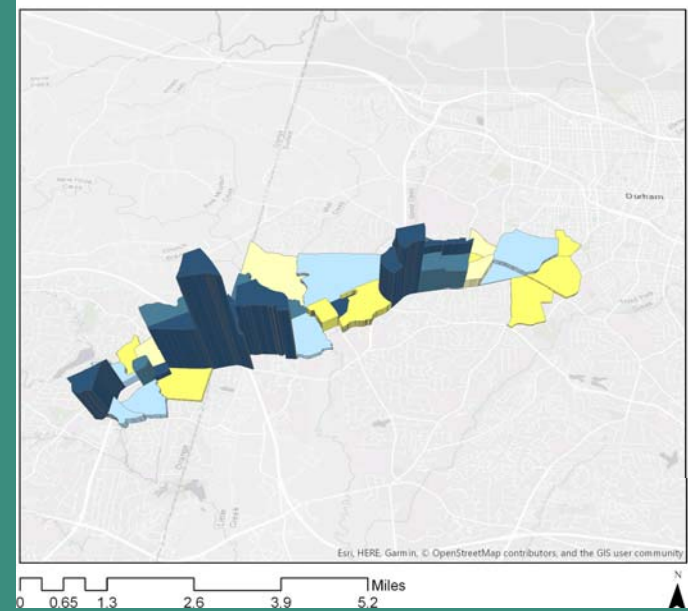
JOBS AND HOUSING

- ▶ Substantial growth in jobs and housing
- ▶ Growth primarily focused on D-O LRT station areas
- ▶ Mixed-use high density
 - Greater internal trip capture
 - Transit supportive
 - Facilitates active transportation

JOB AND HOUSING ACTIVITY 2013 | US 15/501 STUDY AREA

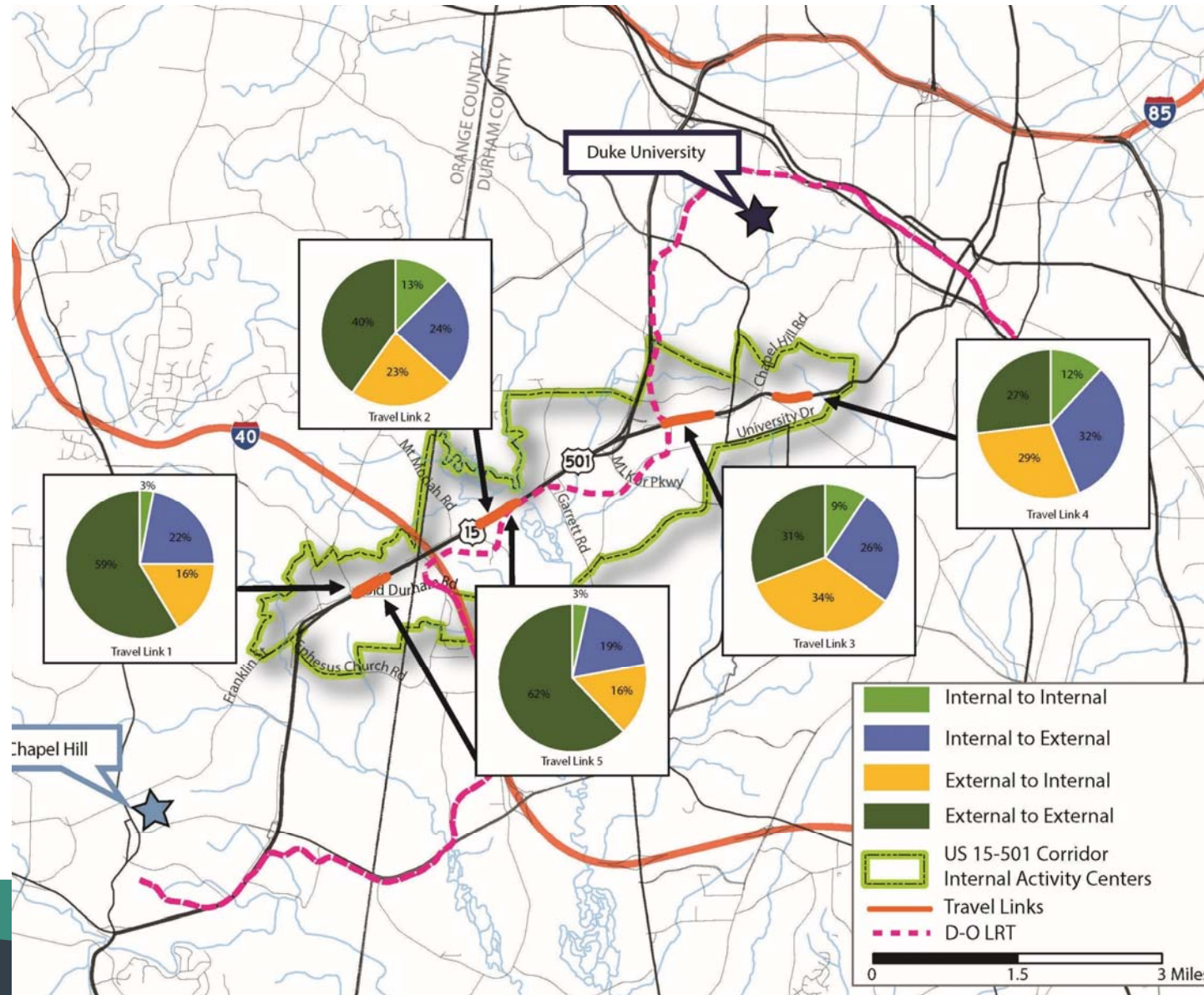


JOB AND HOUSING ACTIVITY 2045 | US 15/501 STUDY AREA



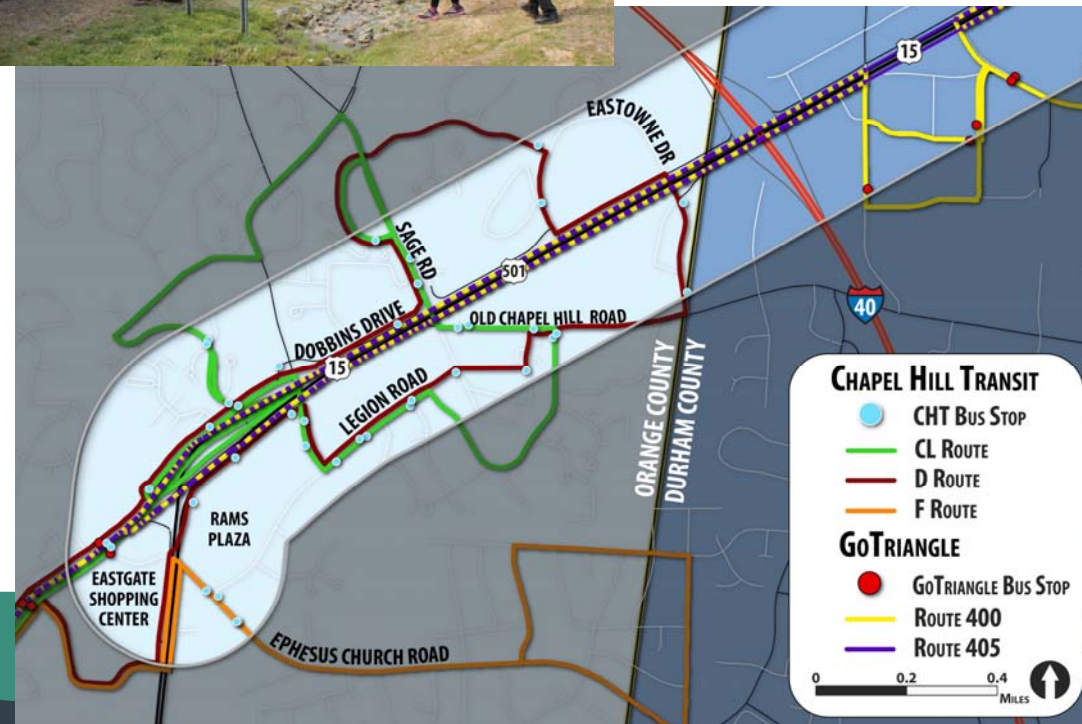
HIGHWAY

- ▶ US 15-501 is a gateway to the region
- ▶ Demand local and regional
- ▶ High conflict between “to” and “through” travelers
- ▶ New development patterns should increase internal trip capture
- ▶ Attractive destination for travelers outside the study area
- ▶ High congestion impacts safety



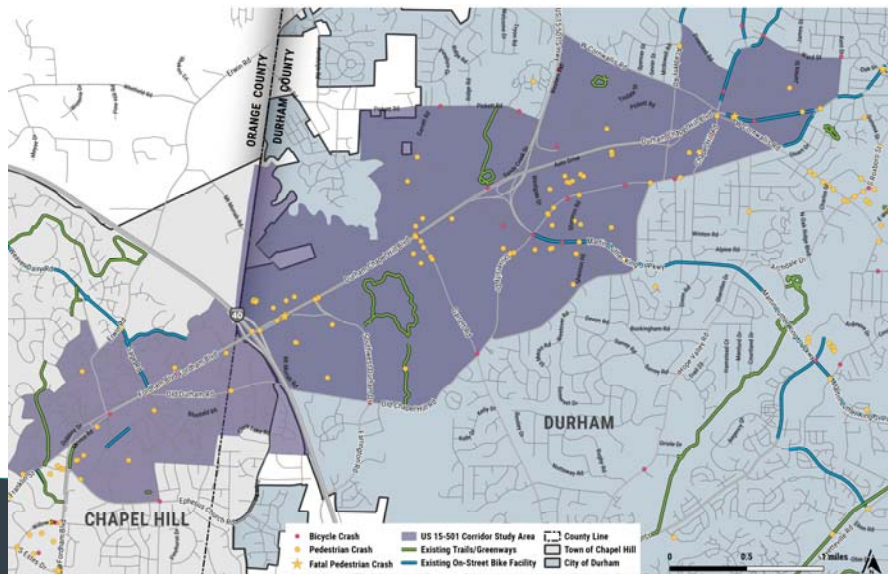
TRANSIT

- ▶ Gaps in the existing system
- ▶ Difficult to efficiently serve existing development
- ▶ Challenging to provide service along the corridor
- ▶ Challenges with congestion and delay



ACTIVE TRANSPORTATION

- ▶ Lack of connectivity between activity centers
- ▶ Few facilities along the corridor
- ▶ Concentrated demand
- ▶ Several areas with high concentrations of vulnerable users





VISIONING



VISIONING VS. PROBLEM SOLVING

Visioning

- ▶ Generates a common goal
- ▶ Offers the possibility of fundamental change
- ▶ Gives us something to move towards
- ▶ Generates creative thinking and passion

Problem Solving

- ▶ Danger of getting mired in technical details or political challenges
- ▶ Disagreement on how to define the problem
- ▶ Useful, and needed, but rarely results in fundamental change on its own

VISIONING for US 15-501

- ▶ Clarifies why we are conducting the study
- ▶ Verifies what will be achieved when the plan is implemented
- ▶ Reflects the thinking of the diverse groups in our community

VISIONING ACTIVITY



1. Login to Wifi:_____ Password:_____



2. Open the webpage:

PolEv.com/tellus

(You do **NOT** need to login once the poll is open the question will appear on your screen.)

- OR -

By text: tellus to 22333





PUBLIC ENGAGEMENT



HOW CAN YOU GET INVOLVED?



- ▶ Visit the project website: reimagining15501.com to sign up for project updates, submit comments, or add your feedback to the interactive map by [July 10, 2018](#)



- ▶ Follow us on social media



- ▶ Next round of public engagement late Fall 2018



OPEN DISCUSSION

